

VPS29 Polyclonal Antibody
Purified Rabbit Polyclonal Antibody (Pab)
Catalog # AP54961**Specification****VPS29 Polyclonal Antibody - Product Information**

Application	IHC-P, IHC-F, IF, ICC, E
Primary Accession	O9UBQ0
Reactivity	Pig, Dog, Bovine
Host	Rabbit
Clonality	Polyclonal
Calculated MW	20506

VPS29 Polyclonal Antibody - Additional Information**Gene ID** 51699**Other Names**

Vacuolar protein sorting-associated protein 29, hVPS29, PEP11 homolog, Vesicle protein sorting 29, VPS29 {ECO:0000303|PubMed:30213940, ECO:0000312|HGNC:HGNC:14340}

Dilution

IHC-P~N/A
IHC-F~N/A
IF~1:50~200
ICC~N/A
E~N/A

Format

0.01M TBS(pH7.4), 0.09% (W/V) sodium azide and 50% Glyce

Storage

Store at -20 °C for one year. Avoid repeated freeze/thaw cycles. When reconstituted in sterile pH 7.4 0.01M PBS or diluent of antibody the antibody is stable for at least two weeks at 2-4 °C.

VPS29 Polyclonal Antibody - Protein Information**Name** VPS29 {ECO:0000303|PubMed:30213940, ECO:0000312|HGNC:HGNC:14340}**Function**

Acts as a component of the retromer cargo-selective complex (CSC). The CSC is believed to be the core functional component of retromer or respective retromer complex variants acting to prevent missorting of selected transmembrane cargo proteins into the lysosomal degradation pathway. The recruitment of the CSC to the endosomal membrane involves RAB7A and SNX3. The SNX-BAR retromer mediates retrograde transport of cargo proteins from endosomes to the trans-Golgi network (TGN) and is involved in endosome-to-plasma membrane transport for cargo protein recycling. The SNX3-retromer mediates the retrograde endosome-to-TGN transport of WLS distinct from the SNX-BAR retromer pathway. The SNX27-retromer is believed to be involved in endosome-to-plasma membrane trafficking and recycling of a broad spectrum of cargo proteins.

The CSC seems to act as recruitment hub for other proteins, such as the WASH complex and TBC1D5. Required to regulate transcytosis of the polymeric immunoglobulin receptor (pIgR- pIgA) (PubMed:15247922, PubMed:21725319, PubMed:23563491). Also acts as component of the retriever complex. The retriever complex is a heterotrimeric complex related to retromer cargo-selective complex (CSC) and essential for retromer-independent retrieval and recycling of numerous cargos such as integrin alpha-5/beta-1 (ITGA5:ITGB1) (PubMed:28892079). In the endosomes, retriever complex drives the retrieval and recycling of NxY-motif-containing cargo proteins by coupling to SNX17, a cargo essential for the homeostatic maintenance of numerous cell surface proteins associated with processes that include cell migration, cell adhesion, nutrient supply and cell signaling (PubMed:28892079). The recruitment of the retriever complex to the endosomal membrane involves CCC and WASH complexes (PubMed:28892079). Involved in GLUT1 endosome-to-plasma membrane trafficking; the function is dependent of association with ANKRD27 (PubMed:24856514).

Cellular Location

Cytoplasm. Membrane; Peripheral membrane protein. Endosome membrane {ECO:0000250|UniProtKB:Q9QZ88}; Peripheral membrane protein {ECO:0000250|UniProtKB:Q9QZ88}. Early endosome Late endosome

Tissue Location

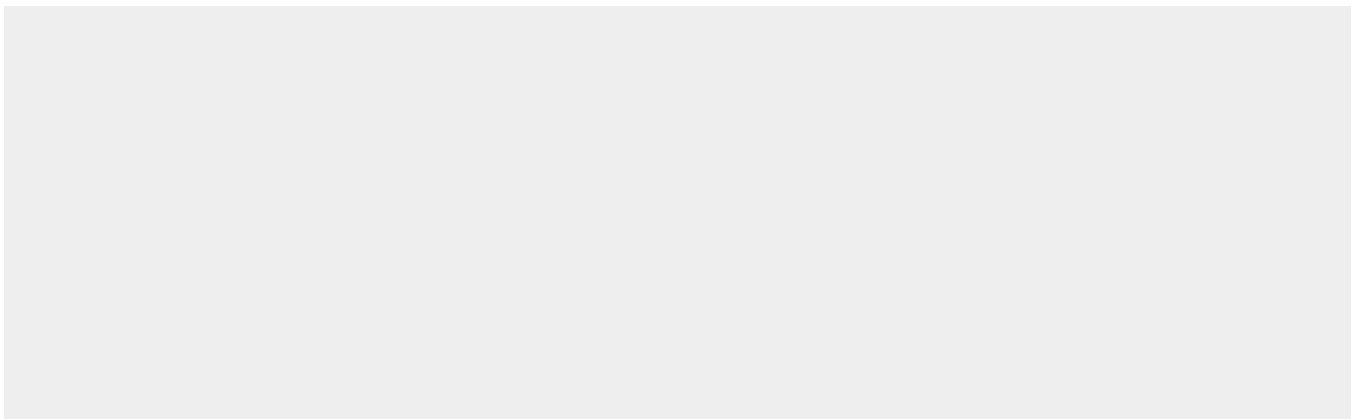
Ubiquitous. Highly expressed in heart, lung, placenta, spleen, peripheral blood leukocytes, thymus, colon skeletal muscle, kidney and brain

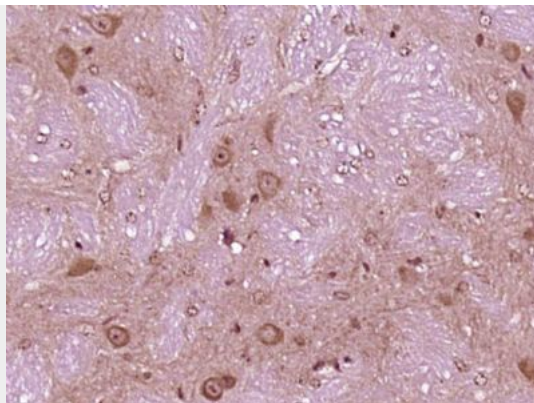
VPS29 Polyclonal Antibody - Protocols

Provided below are standard protocols that you may find useful for product applications.

- [Western Blot](#)
- [Blocking Peptides](#)
- [Dot Blot](#)
- [Immunohistochemistry](#)
- [Immunofluorescence](#)
- [Immunoprecipitation](#)
- [Flow Cytometry](#)
- [Cell Culture](#)

VPS29 Polyclonal Antibody - Images





Paraformaldehyde-fixed, paraffin embedded (Mouse brain); Antigen retrieval by boiling in sodium citrate buffer (pH6.0) for 15min; Block endogenous peroxidase by 3% hydrogen peroxide for 20 minutes; Blocking buffer (normal goat serum) at 37°C for 30min; Antibody incubation with (VPS29) Polyclonal Antibody, Unconjugated (bs-12770R) at 1:400 overnight at 4°C, followed by operating according to SP Kit(Rabbit) (sp-0023) instructions and DAB staining.